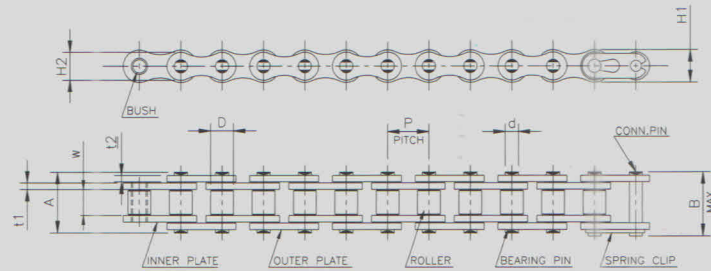


MOTORCYCLE CHAINS



AUTOMOTIVE DRIVE CHAINS

ISO No.	ROMBO Chain No.	Pitch (P)	Width between Inner Plates (W) (Min)	Roller Diameter (D) (Max)	I Plate Height (H1) (Max)	O Plate Height (H2) (Max)	I Plate Thickness (t1) (Max)	O Plate Thickness (t2) (Max)	Width Over Bearing Pin (A) (Max)	Bearing Pin Diameter (d) (Max)	Width Over Joint Fasteners (B) (Max)	Average Weight Per Metre (Kg)	Tensile Strength (Kn) (Min)
J415	D 087 01	12.70	5.15	7.75	10.57	10.57	1.37	1.37	13.16	4.07	14.30	0.476	13.73
J415H	D 08K 01	12.70	5.01	7.75	10.57	10.57	1.76	1.50	14.05	4.07	15.20	0.554	15.69
J415R	D 08M 01	12.70	5.01	7.75	9.90	9.00	1.76	1.58	14.30	4.07	15.40	0.500	15.69
J420	D 088 01	12.70	6.35	7.77	11.56	10.57	1.50	1.50	14.80	3.96	16.40	0.583	15.69
J428	D 089 01	12.70	7.95	8.51	11.56	10.57	1.58	1.50	16.80	4.47	19.00	0.693	18.63
J428H	D 08E 01	12.70	7.85	8.51	11.75	10.20	2.00	2.00	18.90	4.46	21.05	0.848	20.59
J520	D 105 01	15.875	6.35	10.16	14.48	13.51	2.00	2.00	17.44	5.07	18.90	0.944	26.48
J525	D 104 01	15.875	7.94	10.16	14.48	13.51	2.00	2.00	18.95	5.07	20.40	1.007	26.48
J530	D 102 01	15.875	9.40	10.16	14.48	13.51	2.00	2.00	21.80	5.07	24.30	1.055	26.48
J520M	D 105 A2	15.875	6.35	10.16	15.00	12.92	2.00	2.00	17.44	5.25	18.90	1.025	26.48

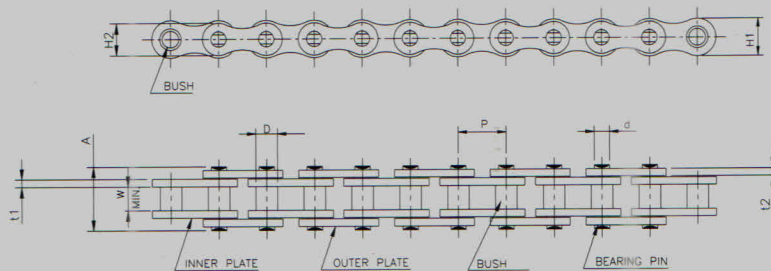
OTHER DRIVE CHAINS

	D 084 01	12.70	4.88	7.75	10.20	9.10	1.25	1.20	12.35	4.07	13.85	0.630	12.01
	D 086.01	12.70	2.38	7.75	9.86	8.18	1.00	1.00	8.20	3.62	-	1.265	8.04
	D 08C 01	12.70	3.30	7.75	9.47	8.18	1.00	1.00	10.20	3.62	11.70	0.289	8.04
	D 08D 01	12.70	6.25	7.77	9.47	8.18	1.25	1.25	14.80	3.58	18.70	0.437	8.92
	D 08F 01	12.70	7.77	4.80	11.56	10.57	1.50	1.50	13.45	3.96	15.15	0.578	15.69
	D 08L 01	12.70	5.15	7.75	9.90	9.00	1.50	1.37	13.16	4.07	14.30	0.450	13.73
	D 08N 01	12.70	7.95	8.50	11.75	10.20	1.76	1.76	17.7	4.50	18.95	0.760	20.59
	D 08P 01	12.70	5.15	7.68	11.56	10.57	1.00	1.00	12.1	4.07	13.00	0.717	11.77
	D 08Q 01	12.70	7.95	8.5	11.56	10.57	1.76	1.76	17.7	5.00	18.95	0.784	20.59
	D 08R 01	12.70	7.95	8.51	12.00	10.80	1.75	1.75	17.7	4.50	18.95	0.794	18.63
	D 08S 01	12.70	7.95	8.5	11.56	10.57	1.58	1.50	16.72	5.00	19.05	0.723	17.65
	D 08T 01	12.70	7.85	8.51	11.75	10.20	2.00	2.00	18.9	5.00	21.05	0.845	20.59
	S 08M 01	12.70	5.01	7.75	10.57	10.57	1.50	1.50	14.00	4.44	15.00	0.750	15.69
	B 103 01	15.875	11.40	10.08	16.58	16.58	2.44	2.85	31.15	7.00	31.85	2.087	46.09
	B 104 01	15.875	7.95	10.16	14.48	-	2.00	2.00	18.90	5.07	20.35	2.510	27.46
	D 101 01	15.875	9.65	10.16	14.48	13.51	1.58	1.58	19.60	5.07	23.70	0.921	22.46
	D 105 A1	15.875	6.35	10.16	15.00	13	2.00	2.00	17.95	5.20	19.40	1.011	31.38

RACING CHAINS-GRAND PRIX CHAINS

420H	D 088 01 A1	12.70	6.25	7.75	11.64	10.65	2.00	2.00	16.7	3.97	17.9	0.747	17.85
520H	D 105 01 A3	15.88	6.35	10.16	14.56	13.59	2.40	2.40	18.90	5.08	20.2	1.094	32.36
50H	D 102 01 A1	15.88	9.40	10.16	14.56	13.59	2.40	2.40	22.10	5.08	23.50	1.211	32.36
525H	D 104 01 A1	15.88	7.94	10.16	14.56	13.59	2.40	2.40	20.50	5.08	21.80	1.151	32.36

ENGINE MECHANISM CHAINS



CAM CHAINS

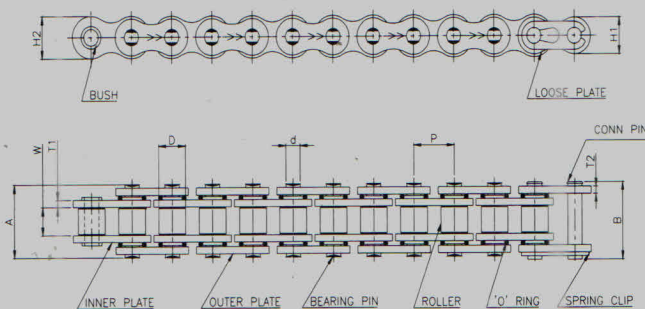
ISO No.	ROMBO Chain No.	No. Of Strands	Pitch (P)	Width between Inner Plates (W) (Min)	Roller Diameter (D) (Max)	I Plate Height (H1) (Max)	O Plate Height (H2) (Max)	I Plate Thickness (t1) (Max)	O Plate Thickness (t2) (Max)	Width Over Bearing Pin (A) (Max)	Bearing Pin Diameter (d) (Max)	Transverse Pitch (Pt)	Average Weight Per Metre (Kg)	Tensile Strength (Kn) (Min)
25	B 04A 01	1	6.35	3.18	3.30	5.80	5.20	0.75	0.75	7.80	2.31	-	0.1357	3.63
* 25SH	B 04D 01	1	6.35	3.18	3.30	5.80	5.80	1.00	1.00	9.00	2.00	-	0.215097	3.92
25H	B 04H 01	1	6.35	3.18	3.30	5.80	5.20	1.00	1.00	9.00	2.31	-	0.17154	4.81
25HT	B 04G 01	1	6.35	3.18	3.30	5.80	5.20	1.00	1.00	9.00	2.31	-	0.17154	4.81
25HT	B 04T 01	1	6.35	3.18	3.30	5.80	5.20	1.00	1.00	9.00	2.00	-	0.193373	3.92
25T-2	B 04A 02	2	6.35	3.18	3.30	5.80	5.20	0.75	0.75	14.42	2.31	6.40	0.275	7.26
25-3	B 04A 03	3	6.35	3.18	3.30	5.80	5.20	0.75	0.75	20.80	2.31	6.40	0.45	12.26

OTHER CAM CHAINS

*	B 04C 01	1	6.35	3.18	3.30	5.80	5.80	1.00	1.00	9.00	2.31	-	0.2014	3.92
*	B 04E 01	1	6.35	3.18	3.30	5.80	5.80	1.00	0.75	8.20	2.31	-	0.1799	3.53
	B 04F 01	1	6.35	3.18	3.30	5.80	5.20	0.75	0.75	7.80	2.00	-	0.1357	3.92
*	B 04K 01	1	6.35	3.18	3.30	5.80	5.80	1.00	0.75	8.92	2.31	-	0.1799	4.81
#	D 04B 01	1	6.00	2.80	4.00	4.95	4.90	0.60	0.60	7.60	1.86	-	0.12186	2.94

* Straight contour plates
Roller chain

O-RING CHAINS



AUTOMOTIVE O-RING CHAINS

ISO NO.	ROMBO Chain No.	Pitch (P)	Width between Inner Plates (W) (Min)	Roller Diameter (D) (Max)	I Plate Height (H1) (Max)	O Plate Height (H2) (Max)	I Plate Thickness (t1) (Max)	O Plate Thickness (t2) (Max)	Width Over Bearing Pin (A) (Max)	Bearing Pin Diameter (d) (Max)	Width Over Joint Fasteners (B) (Max)	Average Weight Per Metre (Kg)	Tensile Strength (Kn) (Min)
J415 OR	D 087 01	12.70	5.15	7.75	10.57	10.57	1.37	1.37	15.10	4.07	16.24	0.476	13.73
J428 OR	D 089 01	12.70	7.95	8.51	11.56	10.57	1.58	1.50	19.00	4.50	20.30	0.693	18.14
J520 OR	D 105 01	15.875	6.35	10.16	14.48	13.51	2.00	2.00	20.57	5.07	22.04	0.944	24.52

OTHER O-RING CHAINS

08B OR	D 083 01	12.70	7.75	8.51	11.56	10.57	1.58	1.50	19.00	4.45	20.30	0.693	17.85
10B OR	D 101 01	15.875	9.65	10.16	14.48	13.51	1.58	1.58	21.94	5.06	23.53	0.921	22.21