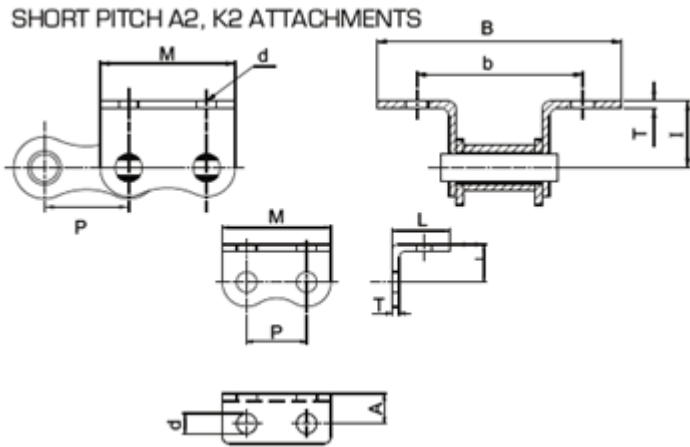




**SHORT PITCH A2, K2 ATTACHMENTS**



DIN 8187-2 Outer Attachments for European Series

Base Chain Model	ROMBO ATT. No.	P	T	d	M	A	L	I	B	b
08B	48 D 083 01 K2 00	12.586	1.58	4.50	23.22	6.84	12.34	8.89	36.40	25.40
10B	48 D 101 01 K2 00	15.77	1.58	5.50	29.31	9.17	15.60	10.30	44.63	31.80
12B	48 D 120 01 K2 00	18.91	1.81	6.60	32.99	11.08	18.23	13.40	52.40	38.10
16B	32 D 160 01 K2 19	25.40	3.05	6.80	45.90	12.50	26.20	15.90	78.20	50.80
20B	48 D 200 01 K2 00	31.75	3.53	9.00	58.04	17.00	28.10	19.80	85.70	63.50

ANSI B29.1 Outer Attachments for American Series

Base Chain Model	ROMBO ATT. No.	P	T	d	M	A	L	I	B	b
40	32 D 08A 01 K2 01	12.586	1.50	4.20	23.22	7.00	14.07	7.90	39.74	25.40
50	32 D 102 01 k2 01	15.77	2.00	5.50	29.28	8.85	16.35	10.30	46.80	31.81
60	32 D 121 01 K2 01	19.05	2.39	5.10	34.87	10.05	18.90	11.90	55.80	38.10
80	32 D 161 01 k2 03	25.247	3.05	6.80	45.90	13.91	27.20	15.90	77.40	50.80
100	32 D 201 01 K2 01	31.75	4.00	8.21	56.69	17.87	28.32	19.84	84.40	63.50
120	32 D 241 01 K2 01	38.10	4.70	9.81	68.71	20.08	34.38	23.01	104.80	76.20
140	32 D 281 01 K2 01	44.45	5.56	11.38	80.52	27.29	43.44	28.58	121.20	88.90
160	32 D 321 01 K2 01	50.80	6.30	13.11	91.44	27.83	47.53	31.75	141.00	101.60

Work Standard Outer Attachments for European Series

Base Chain Model	ROMBO ATT. No.	P	T	d	M	A	L	I	B	b
06B	32 D 061 01 K2 01	9.525	1.00	3.50	17.60	5.04	9.04	6.50	27.00	19.00
08B	32 D 083 01 K2 03	12.586	1.58	4.30	23.22	8.24	12.74	8.40	37.20	28.20
10B	32 D 101 01 K2 02	15.77	1.58	5.30	29.31	9.18	17.10	10.40	47.60	31.80
12B	32 D 120 01 K2 04	18.91	1.81	5.60	32.99	9.52	22.54	12.00	61.00	35.00
16B	32 D 160 01 K2 05	25.40	3.05	8.00	45.90	13.71	25.11	13.70	76.00	53.20

A2 - Attachment on single side.  
 K2 - Attachment on both sides.

Note : Please select the required attachment either A2 or K2 and specify the frequency of attachment while ordering.