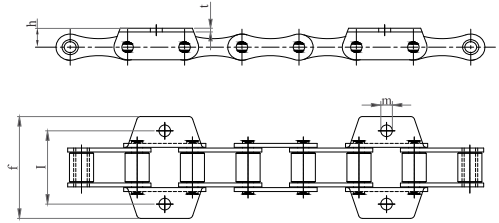


AGRICULTURAL ROLLER CHAINS



INDUSTRY STANDARD CURVED PLATES

'K' ATTACHMENTS

Chain No.	TIDC Att.No.	Attachments		Dimensions						Fig. No
		Outer	Inner	l	f	m	n	h	t	
S32H	K1			42.90	60.50	5.30	-	8.70	2.00	1
	KA	✓		53.00	80.00	8.20	11.25	13.00	2.90	7
S55V	K1	✓	✓	58.00	79.00	9.00	-	13.00	2.90	2
	K2	✓	✓	54.00	74.50	8.50	-	15.00	2.90	2
	K4	✓		54.00	75.00	8.60	-	14.80	2.90	3
	K5	✓		54.00	85.00	8.60	-	14.80	2.90	3
	K7	✓		54.00	79.00	8.50	-	13.00	2.90	2
P41.30	K1	✓		70.50	90.00	8.50	-	16.00	2.90	2
	K2	✓		70.00	94.00	9.00	11.50	16.00	2.90	5
	K4	✓		7.50	90.00	8.50	-	16.00	2.90	4
S55SK8H	K1	✓		60.00	85.00	8.50	-	15.00	2.90	3
	K2	✓		60.00	89.50	8.60	-	15.00	2.90	6
	K3	✓		110.00	140.00	11.20	20.20	15.00	2.90	7
	K4	✓		53.00	72.00	6.20	-	12.80	2.90	8
	K5	✓	✓	60.00	84.10	8.50	-	14.00	2.90	2
	K8	✓		53.00	77.00	6.30	-	12.80	2.90	8
	KA	✓		55.00	79.00	6.80	10.00	15.00	2.90	2
	KB	✓		60.00	85.00	8.60	-	15.00	2.90	6
	KC	✓		56.00	87.00	8.60	-	13.00	2.90	3
U 4140P	K1	✓		54.00	80.00	8.60	-	13.20	2.90	2
P40.60	K1	✓		63.00	83.60	8.60	-	14.00	2.40	2
A557W	k6	✓		57.00	78.00	10.60	-	14.20	3.15	9

'M' Attachments are also available



INNER LINK



OUTER LINK



CONNECTING LINK
SECURED WITH SPLIT PIN



CONNECTING LINK
SECURED WITH WIRE

Above spares are available for all models

'K' ATTACHMENTS

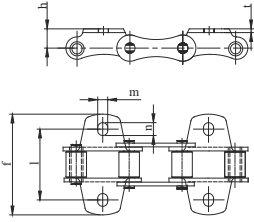


Fig. 1

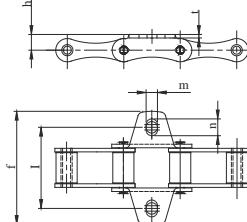


Fig. 2

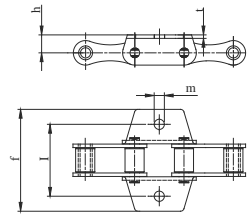


Fig. 3

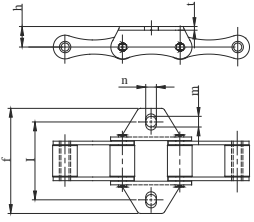


Fig. 4

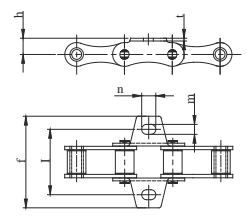


Fig. 5

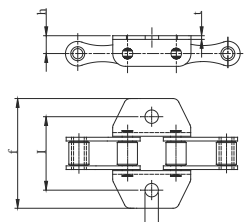


Fig. 6

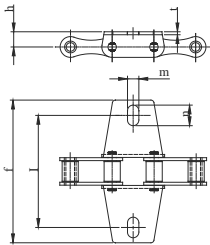


Fig. 7

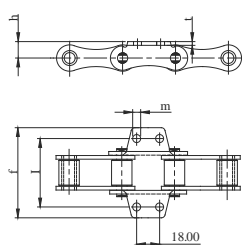


Fig. 8

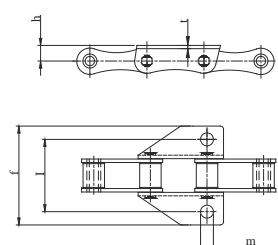


Fig. 9