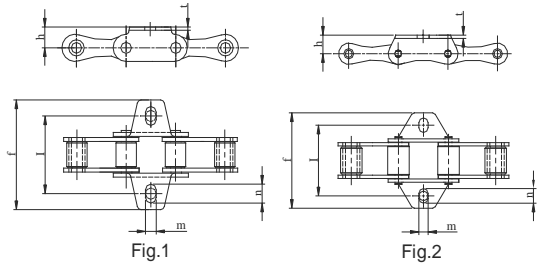


AGRICULTURAL ROLLER CHAINS



ISO 487/DIN 8189



EUROPEAN STANDARD

'K' ATTACHMENTS

Chain No.	TIDC Att.No.	Attachements		Dimensions						Fig. No
		Outer	Inner	l	f	m	n	h	t	
S32	K1	✓	✓	42.90	60.50	5.30	-	8.70	1.75	1
	K3	✓		42.90	60.50	6.50	8.00	8.70	1.75	1
	K4	✓	✓	42.90	64.50	5.00	6.50	8.70	1.75	1
	K5	✓		42.90	60.50	5.50	8.00	8.70	1.75	1
S42	K3	✓	✓	54.00	74.90	8.30	11.50	14.00	2.60	1
	K1	✓		55.00	74.20	8.50	-	11.50	2.60	2
S45/55	K2	✓		51.00	74.20	7.20	-	11.50	2.60	1
	K3	✓	✓	54.00	74.20	8.30	11.50	11.40	2.60	1
	K4	✓	✓	54.00	74.20	6.60	9.80	11.50	2.60	1
	K5	✓		59.80	74.20	9.0 Sq	-	11.50	2.60	1
	K7	✓		56.00	74.20	10.00	-	11.50	2.60	1
	K1	✓	✓	58.80	76.60	7.20	-	11.50	2.60	1
S52	K2	✓		58.80	76.60	8.50	-	11.50	2.60	1
	K3	✓		58.80	76.60	8.60	8.20	11.50	2.60	1
	K4	✓	✓	58.80	76.60	8.40	10.00	11.50	2.60	1
	K5	✓		58.80	76.60	8.40	-	11.50	2.60	1
	K3	✓	✓	66.65	95.30	8.30	14.70	11.40	2.60	1
S62	K4	✓	✓	66.65	95.30	6.65	13.05	11.40	2.60	1
	K5	✓		66.65	95.30	8.30	14.70	11.40	2.60	2
	K7	✓		66.65	95.30	8.30	-	11.40	2.60	1
	S77	K3	✓	✓	76.20	101.60	8.60	12.70	20.80	4.00
S88	K3	✓	✓	96.80	119.40	8.60	11.20	20.80	4.00	1

'M' Attachments are also available



INNER LINK



OUTER LINK



CONNECTING LINK
SECURED WITH SPLIT PIN



CONNECTING LINK
SECURED WITH WIRE

Above spares are available for all models