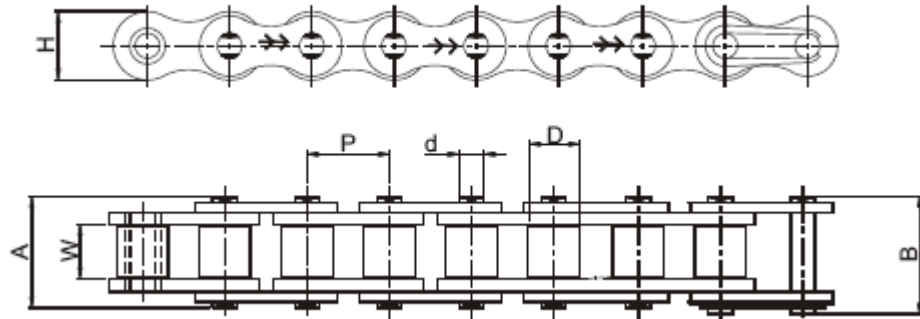




PLATED CHAINS - EUROPEAN SERIES

PLATED CHAINS - EUROPEAN SERIES



Nickel Plated Chains : These chains are ideal for use in light corrosive atmosphere or where good appearance is required.

Zinc Plated Chains : These chains are used in corrosive atmosphere and outdoor applications.

ZAC Chains : Excellent corrosion resistance with same strength and breaking load values as standard chains. The chains are designed to withstand a minimum of 250 hrs of salt spray testing as per ASTM B 117.

Intl Ref. No.	Pitch (P)	Width between Inner Plates (W) (Min)	Roller Dia (D) (Max)	Plate Height (H) (Max)	Bearing Pin Dia (d) (Max)	Width Over Bearing Pin (A) (Max)	Width Over Joint Fasteners (B) (Max)	Projected Bearing Area (Sq.cm)	Avg. Weight Per Metre (kg)	Tensile Strength (KN) (Min)		
										NP	ZP	ZAC
04B-1	6.00	2.80	4.00	5.00	1.85	7.40	10.30	0.08	0.12	3.00	2.55	3.00
05B-1	8.00	3.00	5.00	7.10	2.31	8.60	11.70	0.11	0.18	5.00	4.25	5.00
06B-1*	9.525	5.72	6.35	8.20	3.28	13.50	16.80	0.28	0.40	9.00	7.65	9.00
08B-1	12.70	7.75	8.51	11.80	4.45	17.00	20.90	0.50	0.68	18.00	15.30	18.00
10B-1	15.875	9.65	10.16	14.70	5.08	19.60	23.70	0.67	0.91	22.40	19.04	22.40
12B-1	19.05	11.68	12.07	16.10	5.72	22.70	27.30	0.88	1.12	29.00	24.65	29.00
16B-1	25.40	17.02	15.88	21.00	8.27	36.10	41.50	2.07	2.59	60.00	51.00	60.00